

Protecting what matters most

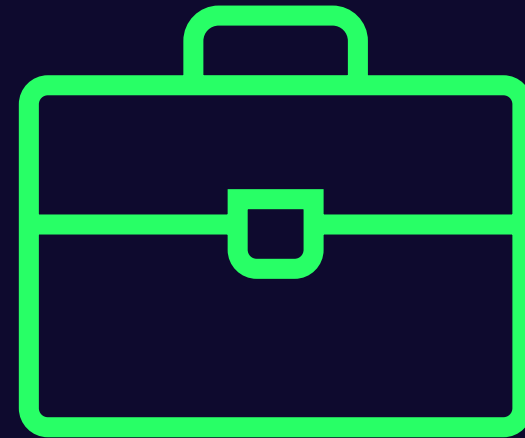


**What is your most
important asset?**



It's you!

**...and your ability to work
and grow your income over
the course of your career.**

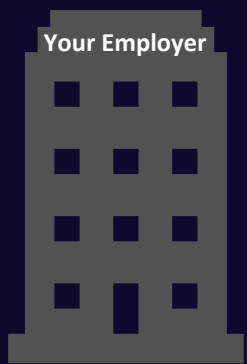
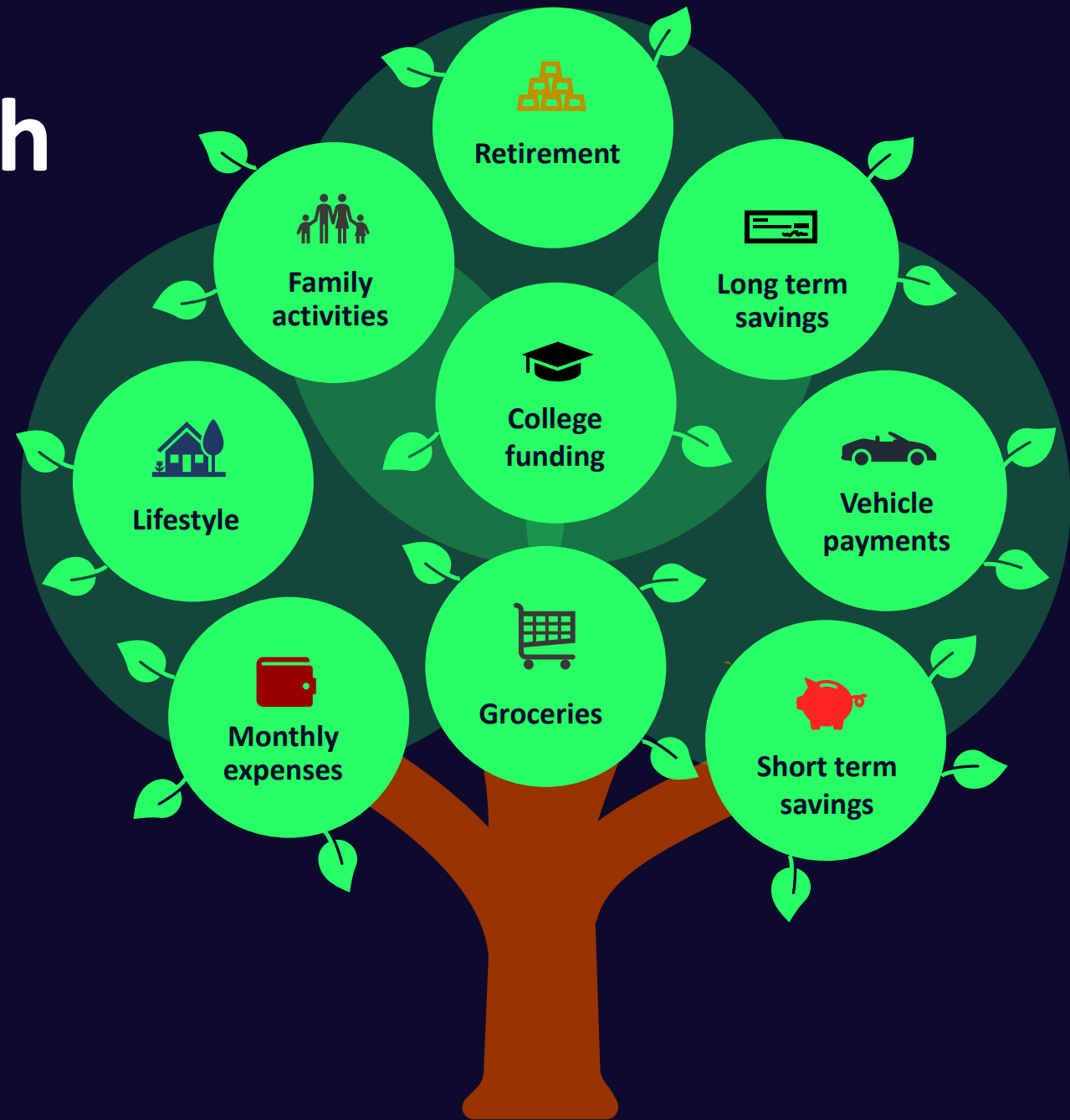


**Have you ever thought about
how much money you will earn
from now until you retire?**

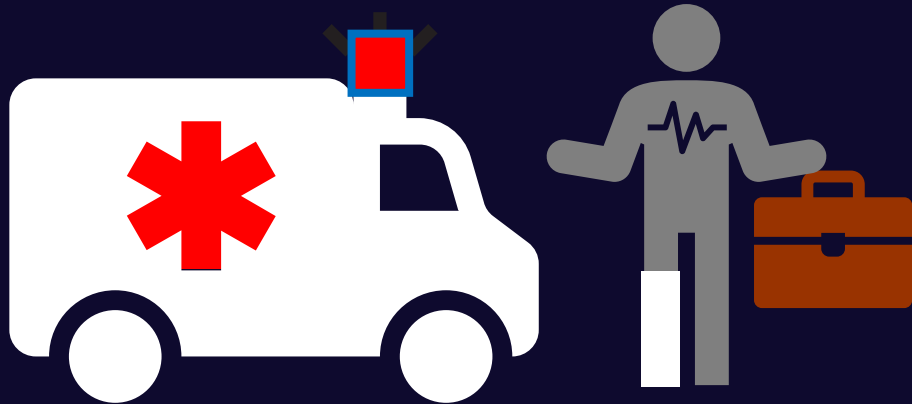


Chances are, it could be significant. This may be one of your most important assets...

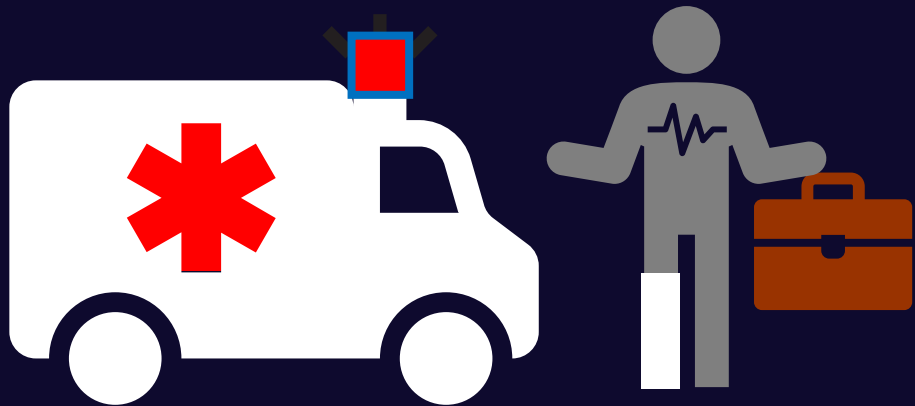
Every financial branch you have needs your income to survive.



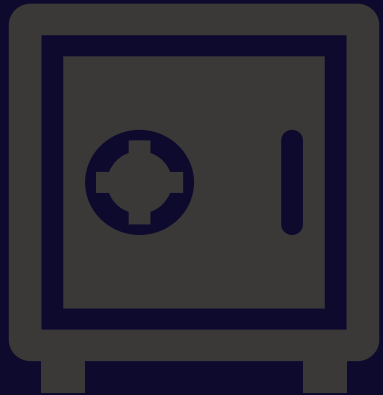
**But what if a health event
caused your income to
stop at a moment's
notice?**



What would happen to your financial tree?



**This is when having an
income protection policy
can become critical.**



It replaces a portion of your income if you're unable to work.



**This can help keep
your lifestyle,
retirement goals
and future dreams
alive!**



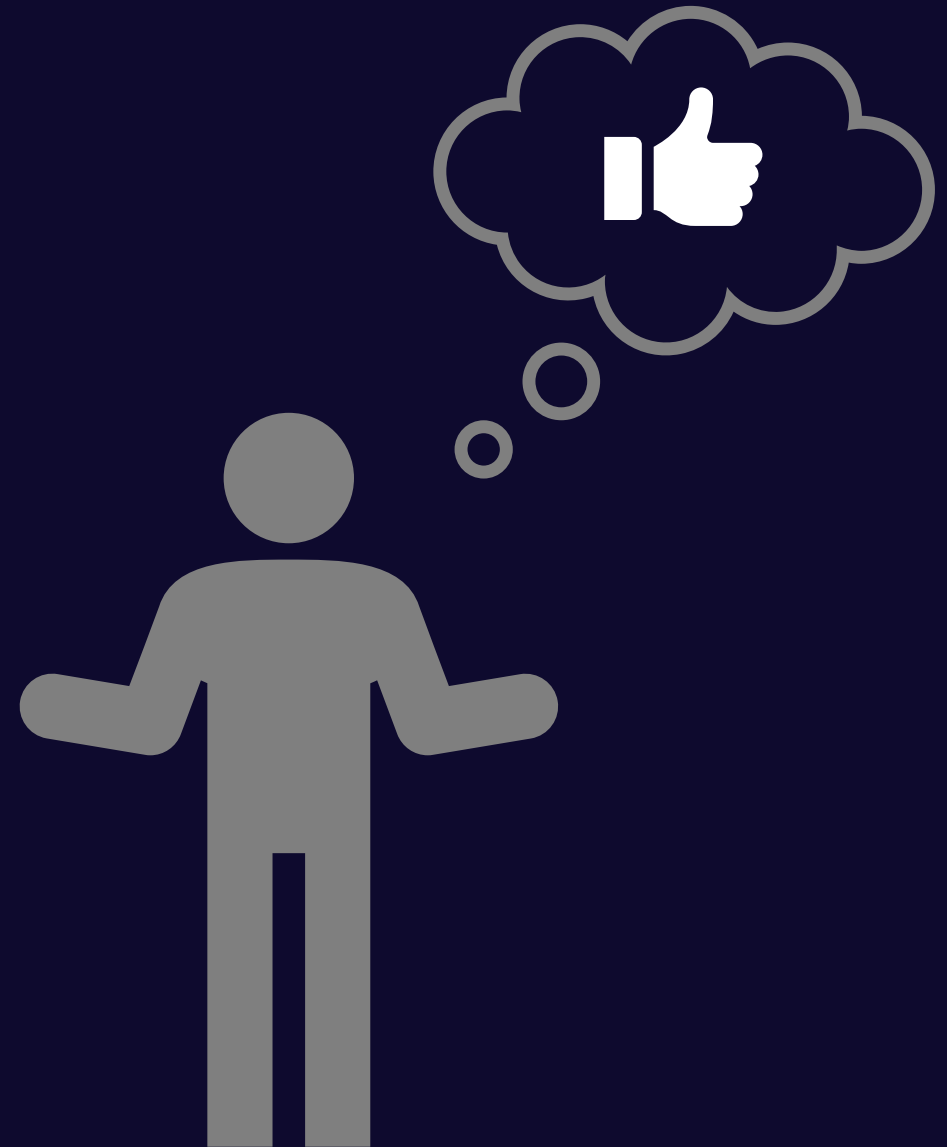
**What is the next
step you can take?**



Have an income protection analysis done specifically for your situation.



This will help you better understand if an income protection plan is right for you.





Thank you!

www.lffadvisors.com

Insurance products issued by Principal National Life Insurance Company (except in NY), Principal Life Insurance Company, and the companies available through the Preferred Product Network, Inc. Referenced companies are members of the Principal Financial Group®, Des Moines, IA 50392. Keith Davis, Principal National and Principal Life Financial Representative, Principal Securities Registered Representative, Investment Adviser Representative. Lake Forest Financial Advisors is not an affiliate of any company of Principal Financial Group.

This is an advertisement for individual disability income insurance. Disability insurance has limitations and exclusions. Guarantees are based on the claims-paying ability of Principal Life Insurance Company. This presentation is not approved for use in New Mexico and Oregon. 2898397-052023